



# HOW TO MAKE SPOOKY POTIONS

These hair-raising potions can be made by the glass, as shown, or in large quantities for your pumpkin-head cauldron. You may need these ice techniques below.

## Coloured ice



Use coloured juice or add a few drops of food colouring to a pitcher of water, pour it into an ice-cube tray, and freeze overnight—simple but effective!

## Crushed ice



To make the ice for your crushes, put some ice cubes into a bag, close the top, and whack it hard with a rolling pin!

## Hot Chocolate Bones

Make this welcoming brew to warm the bones of the trick-or-treaters on their return!

### Brewing the Bones

1 tsp of cocoa powder  
1 mug of milk, some sugar, and marshmallows

Mix a teaspoon of cocoa powder into a small amount of milk to make a paste, add sugar to taste, pour in hot milk, and stir. Add the marshmallows, which will melt—delicious!

Decorate a long straw or spoon with a paper skull.



## Lemon and Lime Slime

Watch the amazement on your friends' faces as the drink turns greener as the ice melts!

### Slurping the Slime

1 glass of lemon-lime soda  
green ice cubes

Simply throw the ice cubes into the lemon-lime soda and decorate!

Hang a few creepy-crawlies from the side.



## Vampire Broth

Mix this broth in front of your friends and watch it come alive before your eyes!

### Fixing the Froth

1 glass of cola  
1 scoop of vanilla ice cream

Fill a glass about two-thirds full of cola, add a scoop of ice cream, and STAND BACK!

Cut out some black paper bats to swoop from your straws.



## Witches Brew

Eye of newt, blood of bat, frog's tongue, and a squeeze of lemon. A brew with more than a few surprises!

### Mixing the Magic

Half a cup of cranberry juice  
Half a cup of lemon-lime soda  
Green ice cubes  
Chewy candy

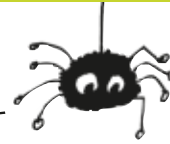
Mix the cranberry juice and soda together, add the ice cubes, and throw in the chewy candies as surprises!

Let a slithery, slippery snake slide over the side.





# How to make JEERING JARS



Collect glass jars or vases, of any shape or size, and some bright tissue or plain tracing paper, and you are ready to start making your jeering jars and flickering flashlights! Small candles with flat bottoms are the safest candles to use and provide a flickering light when placed inside your creepy jars. When you light them, make sure you ask an adult to help you.

Ask an adult:  
to light the candle



## Tissue Paper Face

A simple face is a great pattern to use. The candle shimmering through the features will drive off any wandering spirits!

Cut some tissue paper to fit the jar.

Draw a face and cut it out.

Tape the tissue to the jar.

You could also add a layer of yellow tissue paper under the cutout face.

Ask an adult to tie string around the rim, light a candle inside, and hang up your jar!

## Night Jar

Tracing paper can also be used to decorate a jar. Use a marker to draw a picture on the tracing paper or cut out shapes from black construction paper and glue them on. Wrap the paper around the jar and light the candle!



Cut out black shapes and glue them to the paper.

Draw a picture on the paper using a black marker.



## Flashy Flashlight

Your friends will be green with envy when you flash your new light! Take it outside at dusk to see its full effect!

Cut an 8-in (20-cm) piece of tracing paper to fit around the flashlight.

Cut spooky shapes out of black paper and glue them on.

Wrap the paper around the end of the flashlight, with shapes on the inside.

Tape down the seam.

Cut a frill out of crêpe paper and stick it around the handle.

Turn it on and you're ready to go!





# SILHOUETTE WINDOWS

Swooping bats and petrified pumpkins  
silhouetted in your windows will startle any passerby!

Tape the tissue paper to  
the back of your picture.



Draw a picture.



Cut it out.



Tape on tissue paper.



## Creepy Castle

The lights are on  
in this castle, but is  
anyone home?  
Create this creepy  
scene by using pieces  
of different colored  
tissue paper on the  
back of your picture.



## Magic Lamp

You can even spook up a  
lamp. Measure and cut the  
shape of your lampshade  
out of black paper. Draw a  
Halloween picture on it, cut out  
the image, stick it onto your lamp,  
and turn on the light!



Overlap the two ends  
and tape them to make  
the lampshade shape.

